

SD Toolbox User Manual v2.2

Main features:

- read SD card type and size
- read SD card CID number
- decode CID number
- lock/unlock card with password*
- set/remove write protection
- erase card and remove all protections

*This device doesn't extract unknown passwords from SD card and doesn't calculate any passwords from CID. Password for SD card must be known to unlock it !



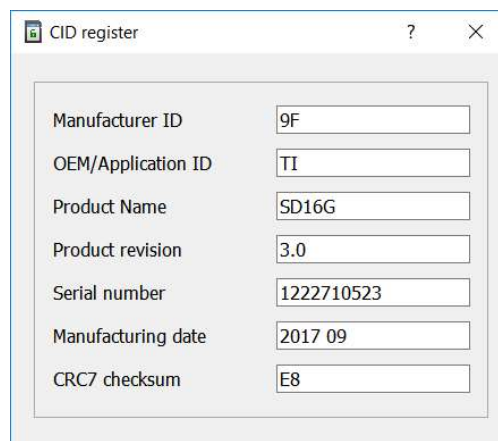
Indicators and controls:

- 1 – SD card status indicator. Shows locking and write protection status
- 2 – SD card type and size.
- 3 – SD card CID number (hex format)*
- 4 – CID decoder
- 5 – Password field (password size: 1-16 bytes in hex)
- 6 – Set / Remove password buttons
- 7 – Set/ Clear write protection buttons
- 8 – Forced erase button.

* CID number is read only, and cannot be changed using this device

CID decoder:

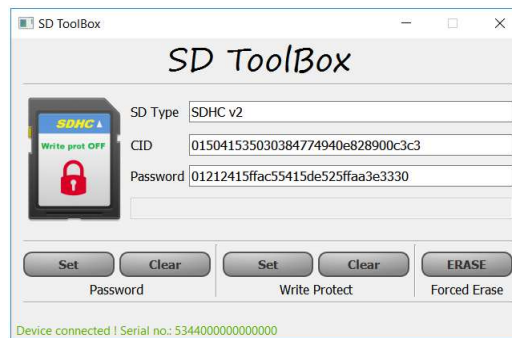
CID decoder is activated by pressing button with question mark next to CID number.



Locking Card with password:

SD card locked with password is protected from any access to SD card data. When such SD card is inserted to the PC, it is not detected by system at all and no read/write or any other functions are allowed.

1. insert SD card into device SD slot
2. SD card will be detected and SD type, CID number and status will be shown.
3. Enter 1-16 bytes password in **HEX** to the password field and press **Set** button
4. If SD card locked successfully, SD status indicator will change lock symbol to **red**.



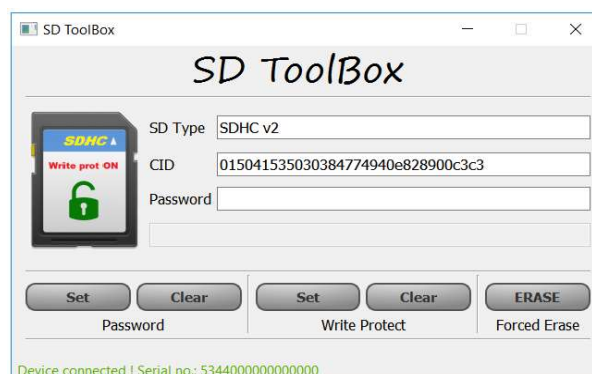
Unlocking Card with password:

1. insert SD card into device SD slot
2. SD card will be detected and SD type, CID number and status will be shown.
3. Enter 1-16 bytes password in **HEX** to the password field and press **Clear** button
4. If SD card unlocked successfully, SD status indicator will change lock symbol to **green**.

Setting/Removing write protection:

This type of write protection is used to protect SD card data from modifying its contents. When such protection is set, SD card inserted into PC reader is read only and can't be formatted, erased or any new data written.

1. insert SD card into device SD slot
2. SD card will be detected and SD type, CID number and status will be shown.
3. To set write protection press **Set** button, to remove write protection press **Clear** button
4. SD card write protection status is indicated on SD status indicator.



Forced Erase:

If SD card is locked with Password and password is unknown SD card is unusable. Its possible to remove password protection with Forced Erase function and it will allow to use SD card again. Forced erase clear password, write protection and **ERASE ALL DATA** on SD card and data from SD card can't be recovered. So use it with caution !!!

Questions & orders: zelemar.eu or on Ebay <http://www.ebay.com/itm/122536650264>

SD Toolbox software: <https://zelemar.eu/SDToolBox/setup.zip>

RNS315 SD Card password by CID: <https://zelemar.eu/rns315/>