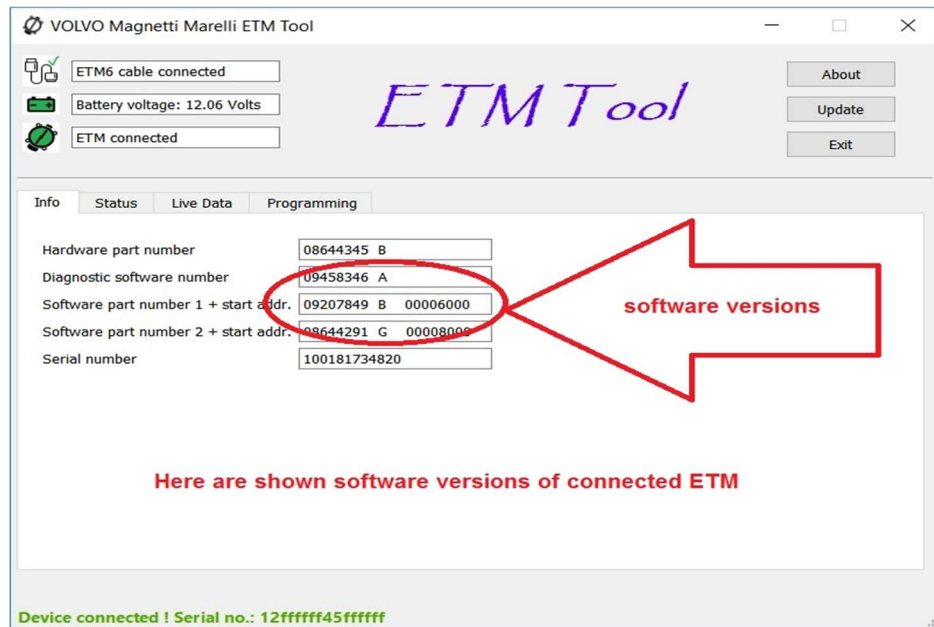


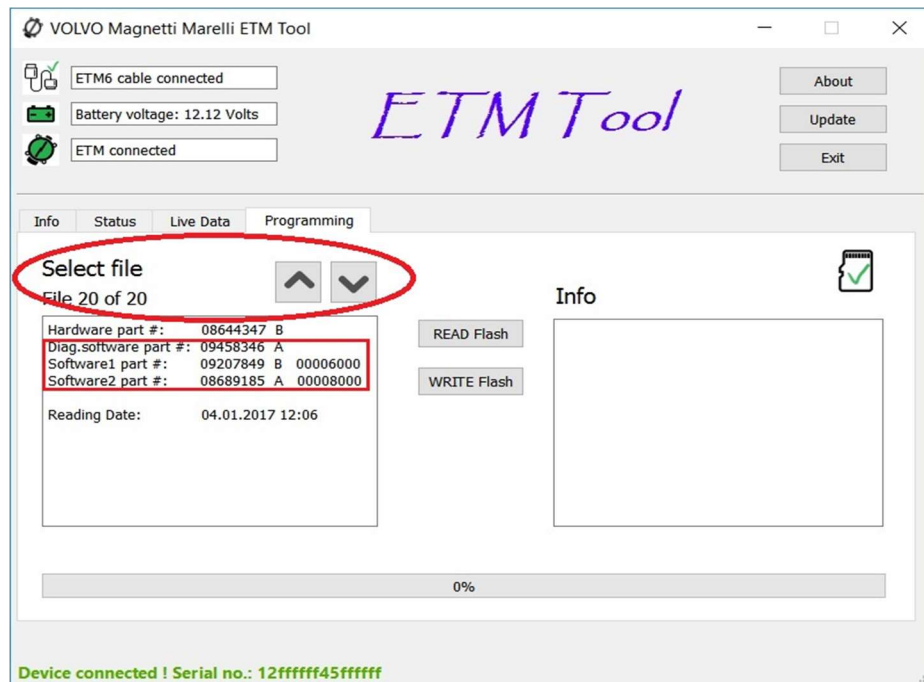
Volvo Magneti Marelli throttle body programming

1. Connect original ETM to the device, read software versions.



2. Press "Programming" tab and check if there is the same software in the device database

only the Diagnostic software version, and other 2 software version numbers matters. Hardware number can be different and it doesn't matter.



3. If you found the same software in the database as original one, remember file number.
4. Disconnect original ETM and connect ETM to be programmed.

5. Select software file to program and press "Write FLASH"
6. ETM will be reprogrammed with selected software and restarted.

If device database doesn't contain necessary software for programming. You can read it from original ETM:

1. connect original ETM and press "READ Flash"
2. all ETM software will be read and added to the internal database last position.
3. Disconnect original ETM and connect ETM to be programmed
4. Select readed software file and press "Write Flash" and it will be programmed

If original ETM is totally "dead" or car already have a changed ETM to the wrong one and you can't read original software You can simply try all software files available on database and you will find one, which works for particular car.